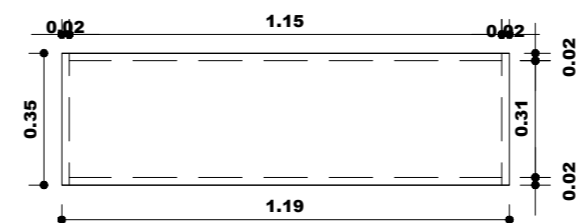
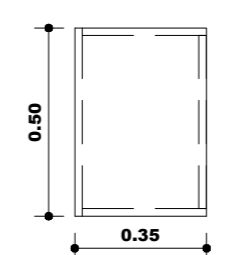


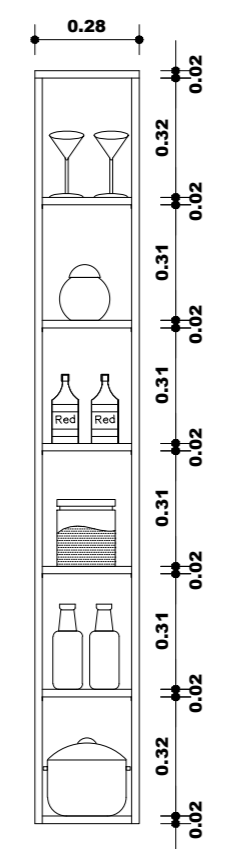
PLANTA-BAIXA - ARMÁRIO ALTO - AA
ESCALA: 1/20



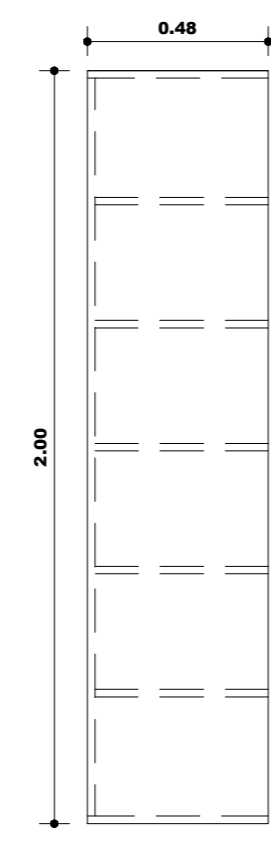
PLANTA-BAIXA-ARMÁRIO SUSPENSO - AS
ESCALA: 1/20



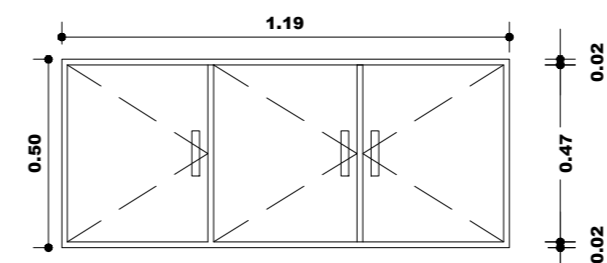
VISTA LATERAL - AS
ESCALA: 1/20



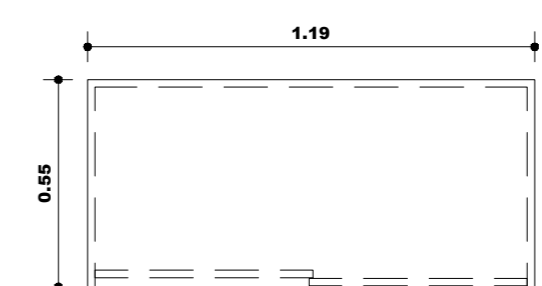
VISTA FRONTAL - AA
ESCALA: 1/20



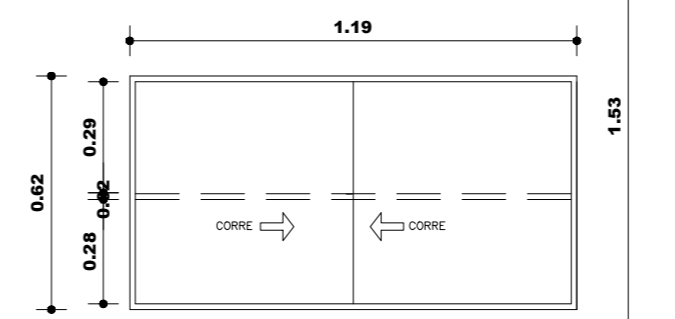
VISTA LATERAL - AA
ESCALA: 1/20



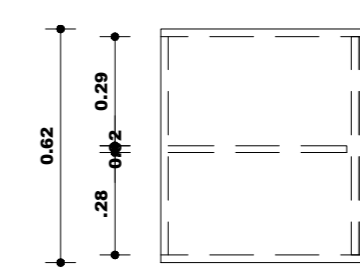
VISTA FRONTAL - AS
ESCALA: 1/20



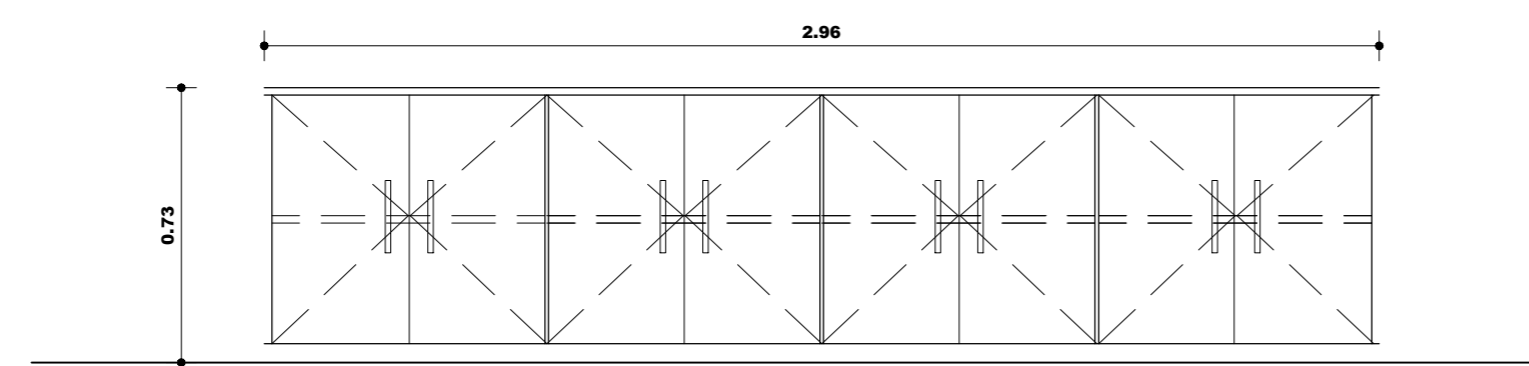
PLANTA-BAIXA-ARMÁRIO BAIXO - AB
ESCALA: 1/20



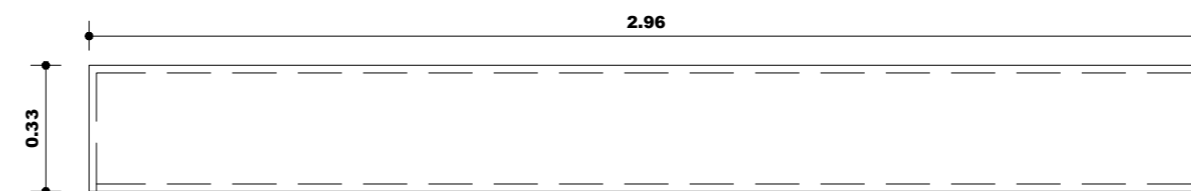
VISTA FRONTAL - AB
ESCALA: 1/20



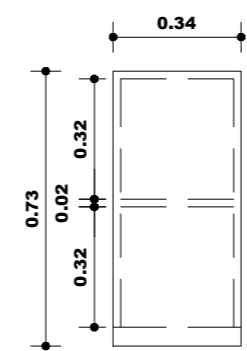
VISTA LATERAL - AB
ESCALA: 1/20



VISTA FRONTAL - ABSR
ESCALA: 1/20



PLANTA-BAIXA - ABSR
ESCALA: 1/20



ELEVAÇÃO LATERAL - ABSR
ESCALA: 1/20

OBSERVAÇÃO COMPLEMENTAR:
ARMÁRIOS DA COPA EM MDF, ACABAMENTO LAMINADO, PADRÃO AMADEIRADO.
REF.: MEL LINHEIRO.

TRIBUNAL REGIONAL DO TRABALHO - 8ª REGIÃO		
PROJETO:	PROJETO ARQUITETÔNICO DE REFORMA - SETIN	PRANCHA:
CONTEÚDO:	PLANTA BAIXA E ELEVAÇÃO DOS ARMÁRIOS DA COPA	07/07
OBJETO:	EDIFÍCIO SEDE	LOCALIZAÇÃO:
DATA:	02/2017	AV. D. PEDRO I, 746 - UMARIZAL - BELÉM-PA
ESCALA:	1/20	ARQUIVO:
		H:\Prosta_Novo Projeto Setin - 13.02.2017-VERSÃO 02.dwg